

SKODA | Kushaq



GLOBAL  NCAP   ★★★★★

India's Safest Family Car



Introduction

Exterior Design

Light Design

Interior Design

Connectivity

Performance

Safety

Storage & Utility

Kushaq Onyx

Kushaq Monte Carlo

Kushaq Sportline

Wheels & Upholstery

Colours & Special Editions

Technical Specifications



Your Bold Companion for Bold New Journeys

Whether you're a seeker of breathtaking vistas or a fearless adventurer in pursuit of the extraordinary, ŠKODA stands as your unwavering bold companion. Get ready to embark on an unforgettable journey filled with cherished moments- let's drive, let's explore.



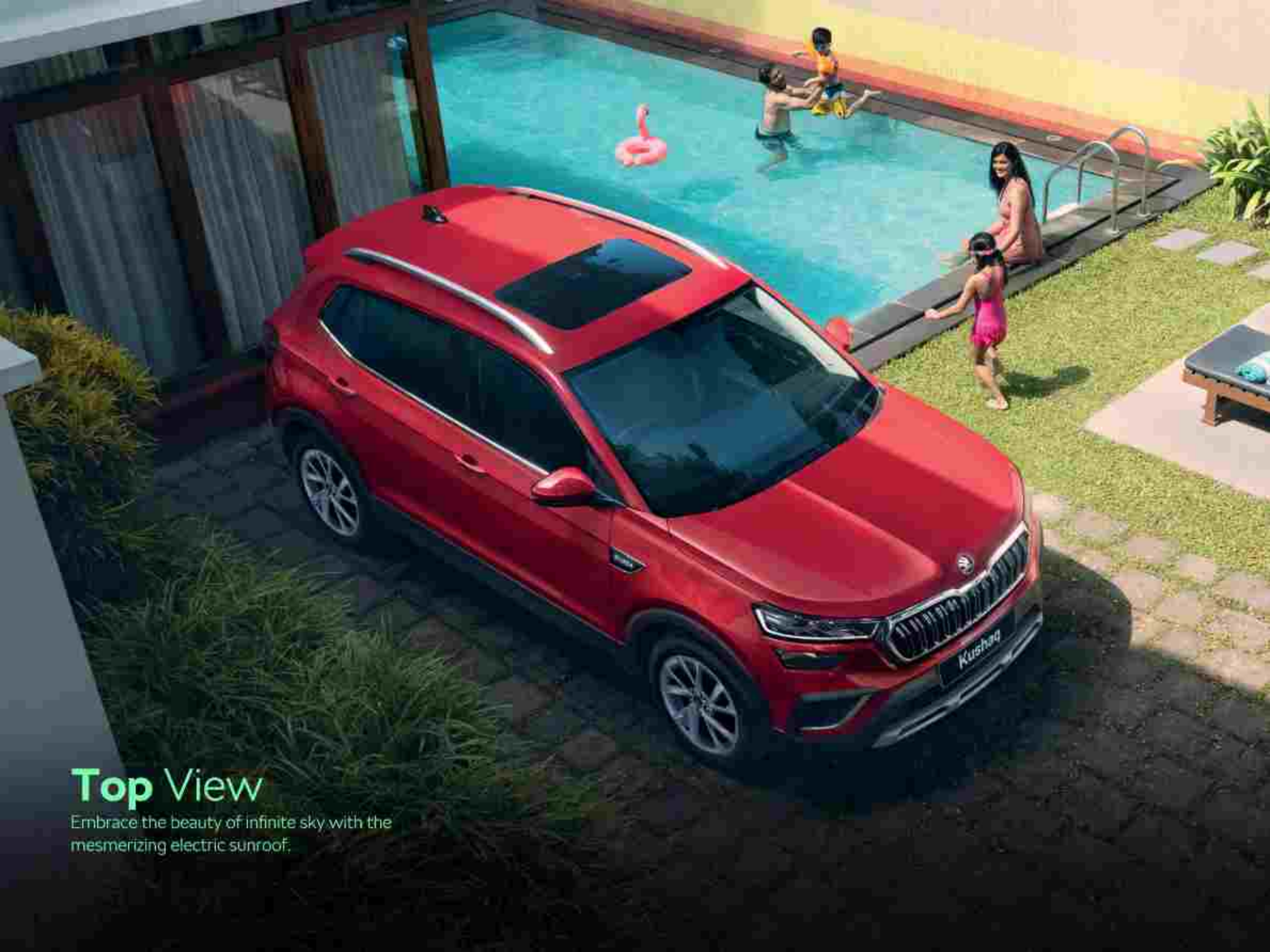
Exterior Design

Embrace the work of art in motion: a symphony of innovative design with bold aesthetics, tailor-made for unveiling the explorer within you.



Front View

Škoda Kushaq's signature grille, chrome accents, striking headlamps, and fog lamps are a testament to design excellence.



Top View

Embrace the beauty of infinite sky with the mesmerizing electric sunroof.



Rear View

Škoda Kushaq gracefully echoes its heritage with rear lettering and czech crystal-inspired tail lights, wrapped in a dynamic design.



Light Design

Škoda Kushaq's impeccable design enhanced by complete led system for uninterrupted exploration.

Enhance Your Exploration with Light Design

Škoda Crystalline LED Headlamps with Day Time Running Lights

The main headlamps boast an eye-catching integrated strip of LED day time running lights. Under poor light conditions, the fog lamps with their static cornering function come into their own, ensuring maximum safety.



Škoda Crystalline Split LED Tail Lamps

The rear lights have LED technology as standard, while the crystalline design refers to Czech cubism and the country's glass-making tradition. Their sharp lines make the vehicle stand out confidently.



Interior Design

Embrace the lap of luxury every time you drive.



Comfort and Space

Begin your exploration enveloped in unparalleled comfort and space. Škoda's craftsmanship shines through its sleek black leatherette seats, offering an extraordinary premium escapade.



Scuff plates with Kushaq inscription



The ambient lighting in white color helps amplify the coziness



Electrically adjustable & Ventilated front seats



Ingenious design for seamless functionality

The Electric Sunroof

The Electric Sunroof with anti - pinch technology allows you to create a large open space above the seats, so you can enjoy new vistas and the journey even more.





Infotainment, Cockpit and Connectivity at Your Fingertips

With Škoda Kodiaq's whole range of infotainment and connectivity features, you are all set for an exploration infused with entertainment.

25.4cm Škoda Infotainment System

A statement piece on the dashboard, the infotainment system can be operated via touch controls. With Wireless SmartLink (Apple CarPlay & Android Auto), seamlessly connect your phone to the system to access Škoda Play Apps, browse menus, navigate, make calls, and more – making every drive a delightful experience.



20.32cm Škoda Virtual Cockpit

The virtual display behind the steering wheel features information like speed, distance travelled, service interval, average fuel consumption and much more.

MyŠKODA ConnectED



MyŠKODA ConnectED Online Services

The inbuilt connectivity mobile online services can be accessed at any time via the MyŠKODA ConnectED app. The app displays features like Vehicle Health Report and remote vehicle data retrieval, including parking location, through automated data storage upon ignition shutdown.

Track Your Car

Keep an eye on the car location from your home or office. Stay informed when someone is driving your car.

Route Tracking / Deviation Alert

Live track the travel route taken by your family and get quick deviation alerts.

Real-time Speed Tracking

Monitor the real-time driving speed.

Walk To Car

Locate your car quickly in big parking lots or crowded areas.

Geofence Breach Notification

Add geofence boundary for your car, get an alert as geofence area is breached.

Device Tampering Alert

Stay alert with prompt notifications on device tampering.

Road Side Assistance

Get road side services like flat tyre repair, battery jump-start, refuelling, towing and a lot more.

Driving Behaviour

Get real-time information on driving behaviour eg: harsh braking, sharp turns, over-speeding, rapid acceleration, etc.



Performance

Built to power through without compromising on performance, the Škoda Kushaq is a powerhouse on the inside and outside.



Engine

The Škoda Kodiaq comes with 2 engine variants - 1.0 TSI and 1.5 TSI. The engines are modern, dynamic, and efficient.

1.0 TSI Engine

The 1.0 TSI engine, with 85 kW power and 178 Nm torque, is powerful yet efficient. The engine is available in both manual and automatic.



1.5 TSI Engine*

The Škoda Kodiaq's 1.5 TSI DSG engine with ACT - Active Cylinder Technology, the first in segment, churns out 110 kW power. Over 250 Nm torque ensures great acceleration and an enjoyable drive.

Manual Transmission

The car is offered with a 6-speed manual transmission.



Automatic Transmission

Depending on the engine, the car can be equipped with 6-speed automatic and 7-speed DSG transmission.





GLOBAL NCAP  ★★★★★

Safety

Explore every km with confidence in India's first ever car with 5-star rating in child & adult safety.

High Strength Steel Frames

Škoda Kushaq's marvelous design and engineering represent the epitome of safety, as evidenced by its 5-star (Global NCAP) rating for child and adult safety.



Safe Happens

In critical scenarios beyond driver control, the car's passive features, like airbags, assume control.

Front Side Airbags

These airbags protect the pelvis and chest of the driver and passengers in case of a side collision.

Curtain Airbags

These two airbags protect the pelvis and chest of the driver and other passengers in the event of a side collision.

Driver & Passenger Front Airbags

While the driver airbag is enclosed in the steering wheel, the passenger airbag is located in the dashboard. If needed, this can be deactivated when a child seat is installed on the front seat.

Traction Control System (TCS)

TCS/ASR stabilises the vehicle during acceleration or low-grip conditions by cutting drive power to spinning wheels.

Anti-lock Braking System (ABS)

ABS helps maintain control of the vehicle during emergency braking. An ABS intervention is noticeable by pulsating movements of the brake pedal.

Roll Over Protection

On identifying a rollover threat, the RSC brakes particular wheels as prevention.

Brake Disc Wiping

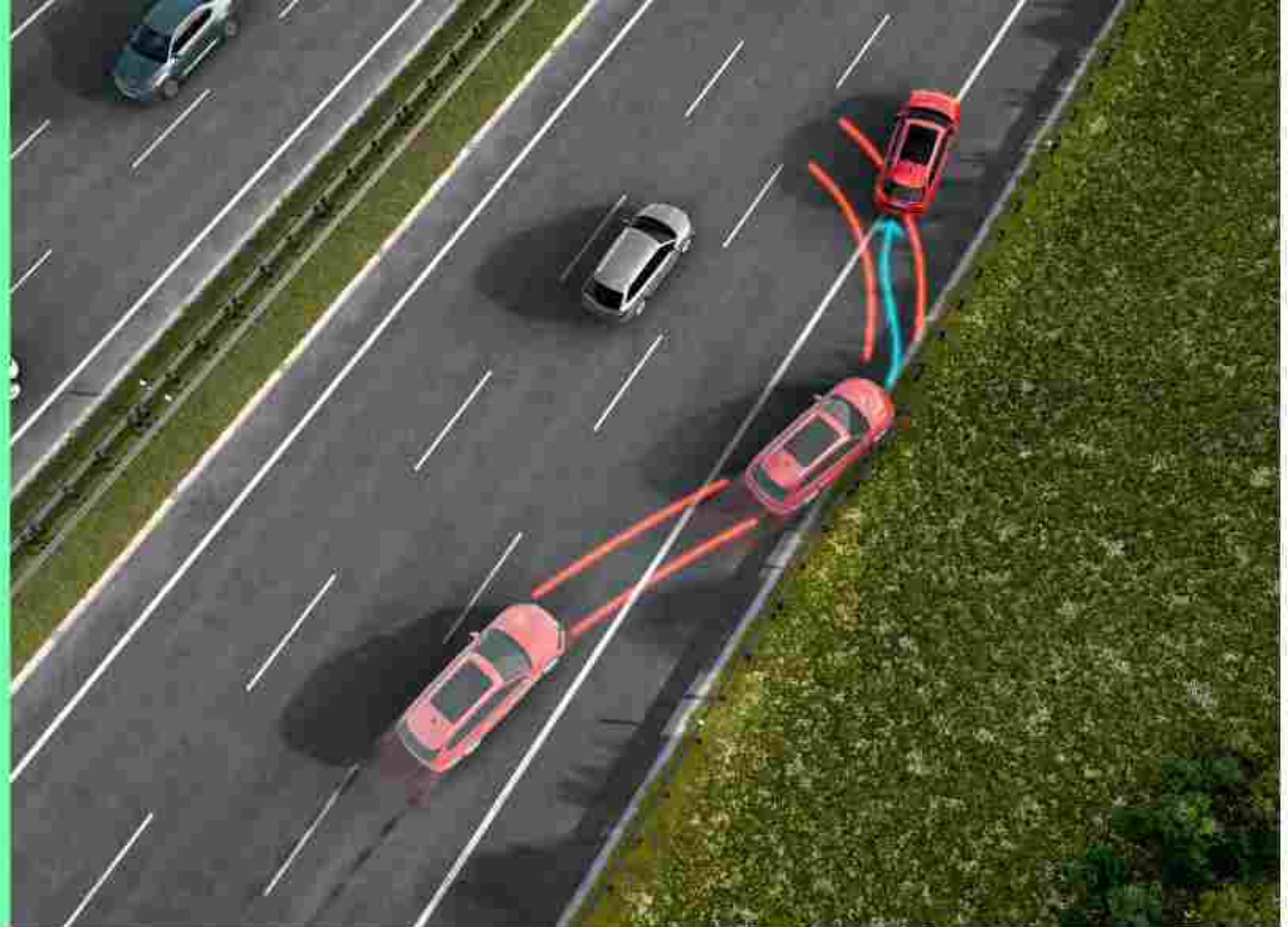
BDW (pair) feature is to prevent slow brake "lock-in" in emergency situations.

Motor Slip Regulation (MSR)

MSR helps to retain control during sudden speed reduction by preventing driver wheel lock, ensuring smoother rotation and control through increased engine speed.

Electronic Differential Locking System

EDS helps to stabilise the vehicle when driving on road surfaces with different grip under the individual wheels. XDS+ helps to keep the vehicle on the turn by effectively braking the wheels on the inner side of the turn. XDS is functional up to 300km/hr.



Hill Hold Control

HHC allows a safe start uphill without using the parking brake.



Tyre Pressure Monitoring System

Avoid unnecessary stops by keeping tabs on your tires. This feature, which is standard across all variants, detects and alerts the driver to a drop in pressure in any of the 4 tires.



Electronic Stability Control (Available Across All Variants)

ESC helps to maintain directional stability and tyre traction during understeer and oversteer.



Storage and Utility

From glasses to refreshments, the spacious storage effortlessly carries your essentials, granting you the freedom to explore without limitations.



Luggage Capacity

Space is what you need for your adventures, not just in terms of practicality and organization but also in terms of your spirit of exploration. The standard rear seats (60/40 loading split) offer a voluminous 365 liters of boot space, complete with 2 fixed hooks and top tether points. When the journey calls for it, effortlessly fold rear seats via the remote release button for convenience on the go.



Footwell Illumination



Storage In Front Centre Armrest



Cooled Glovebox



Storage In the Front and Rear Doors



Cupholders In Armrest



Reflective Safety Tape On All Four Doors

Enhance safety with reflective tape on every door stay visible, stay safe - even when light is low.



Two 3 Kg Hooks In The Trunk

A clever feature that enables you to keep your bags in one place without worrying about spillage.



Smartphone Pocket

A unique and thoughtful feature for rear passengers to conveniently store their phones safely.



Smartgrip Bottle Holder

A clever addition, it is designed to hold your bottles firmly in place, even allowing you to open them with one hand.



Smartclip Ticket Holder

The smartclip ticket holder at the side of your windshield is placed to ensure that the tickets that need to be displayed are done so without hassle.



Utility Recess On The Dashboard

A designated space on the Dashboard to add a little bit of your personality to the car throughout your journey.



Wireless Charging

Seamless Connectivity on the Move with Wireless Phone Charging.



12V Power Socket In Front Centre Console

A 12V power socket is provided in the front centre console to give ease of use on the go.



Adjustable Rear A/C Vents

The adjustable rear A/C vents ensure comfort to all passengers aboard the Škoda Kushaq.



Climatronic A/C with Aircare Function

Climatronic automatic air conditioning with electronic regulation of cabin temperature to ensure that everyone in the car has maximum comfort.



Rear View Camera with Static Guidelines

To make driving and parking a breeze, the car is equipped with a rear camera.



Two USB-C Socket In Front and Rear

Charge your devices with ease with two USB-C sockets in the front and rear.



Kessy

The Keyless Entry Start & Stop System enables convenient locking and unlocking of the car.



Cruise Control

Along with your pre-set speed, cruise control allows speed adjustments without pedal use.

Kushaq Onyx

It's the Automatic choice



1.0 TSI Engine



LED Head Lamp & Front Fog Lamp



Climatronic Auto A/C



Onyx Badge on B-Pillar



Steel Wheels R(16) + Wheel Cover, Tecton



Memory-foam Cushion Pillows with Onyx Inscription



Premium Textile Mats



Rear Wiper & De-fogger



Onyx Inscribed Front Scuff Plates



All-New Kushaq Monte Carlo



» R17 Dual Tone Alloy
Wheels with Red Calipers



» Exclusive
Monte Carlo Badging



» Headlamps with DRLs



» Darkened Tail Lamps



» Red Ambient Lighting



»» Red Themed Dashboard



»» Alu Pedals



»» Black DSG Gearbox



»» Premium Monte Carlo Scuff Plates



»» Monte Carlo Inscribed Ventiladed Leatherette Seats with Red Stitching



»» 20.32cm Škoda Virtual Cockpit with Red Theme



All-New Kushaq Sportline



» R16 Black Alloy Wheels



» Black ŠKODA
Signature Grill



» Dual Tone Roof with
Electric Sunroof



» Darkened Tail Lamps



» Sporty Black Exterior
Accents

Wheels



Classic

Steel Wheels R(16),
Lhotse



Onyx

Steel Wheels R(16) +
Wheel Cover, Tecton



Signature

Alloy Wheels R(16),
Grus



Prestige

Alloy Wheels R(17),
Vega Silver



Sportline

Alloy Wheel R(17),
Black Vega



Monte Carlo

R17 Dual-tone Vega Alloy Wheels
With Red Brake Calipers

Upholstery



Classic

Black fabric woven seats



Signature/ Sportline

Black fabric seats with dual colour sporty
centre stripes



Prestige

Black leatherette front and rear
seats with perforated grey designs



Monte Carlo

Inscribed Ventilated
Red & Black Front leatherette seats

Colours



Candy White



Carbon Steel



Brilliant Silver



Tornado Red



Lava Blue

*Available on select variants only



Kushaq Onyx - Candy White



Kushaq Onyx - Carbon Steel



Deep Black

Dual Tone

Monte Carlo



Sportline



Upper Circle represents the hood/capline
Lower Circle represents the body colour



Technical Specifications

Technical Description	1.0 TSI/85 kW		1.5 TSI/110 kW
Engine	MT	AT	DSC
Engine type	1.0 TSI Petrol, in-line, 4-Stroke Positive Ignition Direct Injection Engine		1.5 TSI Petrol, in-line, 4-Stroke Positive Ignition Direct Injection Engine with Active Cylinder Technology
Clutch	Dry Single Plate	Hydro Dynamic Torque Converter	Dry Double Clutch
Cylinders	3		4
Displacement [cm ³]	999		1498
Max. power/revs [kW at rpm]	85 / 5 000 - 5 500		110 / 5 000 - 6 000
Max. torque/revs [Nm at rpm]	178 / 1 750 - 4 500		250 / 1 600 - 3 500
Fuel consumption - rule 115 of CMVR [KMPL]	19.76	18.09	18.86
Transmission			
Wheel drive	Front Wheel Drive		
Transmission	6-speed	6-speed	7-speed
Chassis			
Front axle	McPherson suspension with lower triangular links and stabiliser bar		
Rear axle	Twist Beam Axle		
Braking system	Hydraulic Diagonal Split Vacuum Assisted Braking System		
Brake - front	Disc		
Brake - rear	Drum		
Steering system	Electro-Mechanical Steering (Power Assisted)		
Wheels	Steel wheel 6J x 16" (Classic/ONYX), Alloy wheel 6J x 16" (Signature), Alloy wheel 6.5J x 17" (Prestige/Sportline)		
Tyres	205/60R16-Classic & Signature, 205/55R17-Prestige & Sportline		
Outside dimensions			
Length [mm]	4 225		
Width [mm]	1 760		
Height [mm]	1 612		
Wheel base [mm]	2 651		
Ground clearance (laden condition) [mm]	155		
Trunk dimensions			
Storage capacity [l]	385 / 1 405		
Weights			
Kerb weight [kg]	1193-1249	1245-1284	1278-1309
Gross weight [kg]	1 640	1 660	1696
Liquids			
Tank capacity [l]	50 Litres		

Equipment	Classic	Onyx	Signature	Sportline	Prestige	Monte Carlo
Engine & Trim						
1.0 TSI/ 85 kW (115 PS)	MT	AT	MT/AT	MT/AT	MT/AT	MT/AT
1.5 TSI/ 110 kW (150 PS)	-	-	DSG	DSG	DSG	DSG
Design						
Wheels						
Steel wheels R (16) + Wheel cover, Lotus	■	-	-	-	-	-
Steel wheels R (16) + Wheel cover, Tector	-	■	-	-	-	-
Alloy wheels R (16), Gris	-	-	■	-	-	-
Alloy wheels R (17), Silver VEGA	-	-	-	-	■	-
Alloy wheels R (17), Dual tone VEGA	-	-	-	-	-	■
Alloy Wheels R (17), Black Vega	-	-	-	■	-	-
Spare Wheel R (15)*	■	■	■	-	-	-
Spare Wheel R (16)*	-	-	-	-	■	■
Exterior Design & Chrome Décor						
Black Lower Garnish - Door	-	-	-	■	-	-
Door handles in body color with dark chrome accents	-	-	-	■	-	■
Roof rails black with load capacity of 50 Kg	■	■	-	■	-	■
Roof rails silver with load capacity of 50 Kg	-	-	■	-	■	-
Onyx Badge on B-Pillar	-	■	-	-	-	-
Aerodynamic Tailgate Spoiler	■	■	■	■	■	-
Dual tone Tailgate Spoiler	-	-	-	-	-	■
Škoda Plain Black Fender Garnish with Chrome outline	■	■	■	■	■	-
Monte Carlo Fender Garnish	-	-	-	-	-	■
Škoda Signature Grill With Chrome Surround	■	■	■	-	■	-
Škoda Signature Grill with Glossy Black Surround	-	-	-	■	-	■
Chrome highlights on front bumper air intake	-	-	-	-	■	■
Pair Bumper Reflectors	■	■	■	■	■	■

Equipment	Classic	Onyx	Signature	Sportline	Prestige	Monte Carlo
Exterior Colour Coding						
Black grained Armoured front and rear diffuser	■	■	-	-	-	-
Silver Armoured front and rear diffuser	-	-	■	-	■	-
Glossy Black Front & Rear Diffuser	-	-	-	■	-	■
Black side armoured cladding	■	■	■	■	■	■
Manually foldable external mirrors - Body Colored	■	■	-	-	-	-
Electrically foldable external mirrors - Body Colored	-	-	■	-	■	-
Glossy Black Electrically Foldable External Mirrors -	-	-	-	-	-	■
Matte Black Plastic Cover On B-Pillar & C-Pillar	■	■	■	-	-	-
Glossy Black Plastic cover on B-Pillar & C-Pillar	-	-	-	■	■	■
Deep Black Painted Roof	-	-	-	■	-	■
Window Chrome Garnish	-	-	-	-	■	-
Trunk Chrome Garnish	-	-	-	-	■	-
Glossy Black Trunk Garnish	-	-	-	■	-	■
Sporty Red Front Brake Calipers - (Available only for 1.5 TSI)	-	-	-	-	-	■
Interior Design, Chrome Décor & Colours						
Dashboard with Grained and Textured décor	■	■	-	-	-	-
Dashboard with Painted décor insert	-	-	■	■	■	-
Dashboard with Dual tone Interior Décor with Ruby Red Metallic inserts	-	-	■	■	-	■
Premium Honeycomb Décor on Dashboard	■	■	■	■	■	■
Dual Tone Centre console & Interior Front Door Handles with Ruby Red Metallic Inserts	-	-	-	-	-	■
Chrome dashboard line	-	-	-	-	■	-
Chrome décor for interior door handles	-	-	■	■	■	■
Chrome ring on the gear shift knob	■	■	■	■	■	■
Black Plastic handbrake with Glossy Black handle button	■	■	■	■	-	-

Equipment	Classic	Onyx	Signature	Sportline	Prestige	Monte Carlo
Black Plastic handbrake with Chrome handle button	-	-	■	-	■	■
Chrome insert under gear-shift knob	-	-	-	-	■	■
Black gloss surround on side air conditioning vents	■	■	-	-	-	-
Chrome trim surround on side air conditioning vents & insert on Steering Wheel	-	-	■	■	■	■
Chrome trim on air conditioning duct sliders	■	■	■	■	■	■
Front Scuff plates with Kodiaq inscription	-	-	■	■	■	-
Monte Carlo Inscribed Front Scuff plates	-	-	-	-	-	■
Safety						
Illumination						
Halogen Headlamps with Skoda Crystalline Day time running lights	■	-	-	-	-	-
Skoda Crystalline LED Headlamps with Day time Running Lights	-	■	■	■	■	■
Skoda Crystalline LED Tail lamps with Reflective lamp	■	■	■	■	-	-
SKODA Crystalline Split LED Tail lamps	-	-	-	-	■	■
Front fog lamps with static cornering function	-	■	■	■	■	■
Rear Foglamps	-	-	-	■	■	■
Light Assistant - Auto Headlamps	-	-	-	-	■	■
Manual coming/leaving home lights	■	■	■	■	-	-
Automatic coming/leaving home lights	-	-	-	-	■	■
LED Reading Lamps - Front&Rear	■	■	■	■	■	■
Ambient Interior lighting - Dashboard & Door Handles	-	-	■	■	■	-
Footwell Illumination	-	-	-	-	■	■
Red Ambient Interior lighting - Dashboard	-	-	-	-	-	■
Rear LED Number Plate Illumination	■	■	■	■	■	■
Visibility						
Anti glare outside rear view mirror	■	■	■	■	■	■
Automatic front wiper system with rain sensor	-	-	-	■	■	■

Equipment	Classic	Onyx	Signature	Sportline	Prestige	Monte Carlo
Rear wiper & Defogger	-	■	■	■	■	■
Auto dimming interior rear view mirror	-	-	-	■	■	■
Braking & Stabilizing Systems						
ESC (Electronic Stability control), ABS (Anti-Lock Braking System) & EBD	■	■	■	■	■	■
MXB (Multi Collision Braking)	■	■	■	■	■	■
HHC (Hill Hold Control)	-	■	■	■	■	■
EDS (Electronic Differential Lock System), XDS & XDS+ (Over 30 Kph)	■	■	■	■	■	■
TCS (Traction Control System), MSR (Motor Slip Regulation)	■	■	■	■	■	■
BDW (Brake Disc Wiping)	■	■	■	■	■	■
ROPS (Roll Over Protection)	■	■	■	■	■	■
Airbags						
Driver & Passenger front airbag	■	■	■	■	■	■
Curtain Airbags	■	■	■	■	■	■
Front Side Airbags	■	■	■	■	■	■
Occupant Restraint						
Three-point seatbelts at front	■	■	■	■	■	■
Three-point rear outer and centre seatbelt	■	■	■	■	■	■
Height adjustable head restraints at Front & Rear	■	■	■	■	■	■
Front Seat Belt Reminder	■	■	■	■	■	■
More						
Start Stop Recuperation	■	■	■	■	■	■
TPMS (Tyre pressure monitoring system)	■	■	■	■	■	■
Rough road package	■	■	■	■	■	■
Child-proof rear door locking	■	■	■	■	■	■
Child-proof rear window locking	■	■	■	■	■	■
ISOFIX for Rear Seats	■	■	■	■	■	■
Door-open indicator	■	■	■	■	■	■
Emergency triangle in the luggage compartment	■	■	■	■	■	■

Equipment	Classic	Onyx	Signature	Sportline	Prestige	Monte Carlo
Dual-tone warning horn	-	-	■	■	■	■
Security						
Electronic Theft Deterrence						
Engine immobilizer with floating code system	■	■	■	■	■	■
Anti-Theft Alarm	-	-	-	-	■	■
Remote Operation						
Central door locking with speed sensor	■	■	■	■	-	-
KESSY (Engine Start/Stop & Locking/Unlocking of Door)	-	-	-	-	■	■
Remote control with foldable key	■	■	■	■	■	■
Central locking and unlocking of doors and boot lid	■	■	■	■	■	■
Comfort						
Seats						
Rear seats split 60/40 foldable with center armrest	-	-	■	■	■	■
Height adjustment for driver seat	■	■	■	■	-	-
Electric Seats with Driver and Co-Driver seats	-	-	-	-	■	■
Front centre armrest with storage	■	■	■	■	■	■
Rear centre armrest	-	-	■	■	■	■
Upholstery						
Black Fabric Woven Seats	■	■	-	-	-	-
Black Fabric Seats with Dual Color Sporty Center Stripes	-	-	■	■	-	-
Ventilated Black Leatherette Front seats with perforated grey design	-	-	-	-	■	-
Black leatherette Rear seats with perforated grey design	-	-	-	-	■	-
Ventilated Red and Black Front Leatherette Seats with Monte Carlo Embossing on Front Headrests	-	-	-	-	-	■
Red and Black Rear Leatherette seats with Monte Carlo Embossing on Two Rear Headrests	-	-	-	-	-	■

Equipment	Classic	Onyx	Signature	Sportline	Prestige	Monte Carlo
Additional Upholstery						
Front & Rear Door armrest with cushioned fabric upholstery	■	■	■	■	-	-
Front & Rear Door armrest with cushioned leatherette upholstery	-	-	-	-	■	-
Front & Rear Door armrest with Red Stitching	-	-	-	-	-	■
Front Center armrest with Red Stitching	-	-	-	-	-	■
Steering Wheel						
2 Spoke Multifunctional Steering Wheel (PU) with chrome scroller	■	-	-	-	-	-
2 Spoke Multifunctional Steering Wheel (Leather) with chrome scroller	-	■	■	■	■	-
2 Spoke Multifunctional Leather Steering Wheel with red stitching and chrome scroller	-	-	-	-	-	■
Height & Length adjustable steering wheel	■	■	■	■	■	■
Paddle Shifters	-	■ (AT Only)	■ (AT Only)	■ (AT Only)	■ (AT Only)	■ (AT Only)
Infotainment & Connectivity						
17.7cm SKODA Infotainment System with SDVS Function (7 Inch Infotainment)	■	■	-	-	-	-
Wireless Smartlink Apple Carplay & Android Auto via USB	■	■	-	-	-	-
25.4 cm Infotainment System with SKODA Play Apps	-	-	■	■	■	-
25.4 cm Infotainment System with SKODA Play Apps & Red theme	-	-	-	-	-	■
Wireless Smartlink Apple Carplay & Android Auto	-	-	■	■	■	■
6 Speakers	■	■	■	■	-	-
SKODA Sound System with 6 High Performance Speakers & Subwoofer	-	-	-	-	■	■
MySKODA Connect- Inbuilt Connectivity	-	-	-	■	■	■

Equipment	Classic	Onyx	Signature	Sportline	Prestige	Monte Carlo
Climate Control						
Manual A/C	■	-	-	-	-	-
Climatronic - Auto A/C with control touch panel & Air Care function	-	■	■	■	■	■
Adjustable dual rear A/C vents	■	■	■	■	■	■
Sunroof						
Electric Sunroof with Bounce Back System	-	-	-	■	■	■
Windows						
Power Windows Front & Rear 4x Control on Driver Side	■	■	■	■	■	■
One-touch automatic operation (Only Driver Side)	-	-	■	■	■	■
Bounce-back system (Only Driver Side)	-	-	■	■	■	■
More						
Dead Pedal for Foot Rest	■	■	■	■	■	■
CONVENIENCE						
Information Display						
4 color medium MFA with 3.5" TFT display MAXIDOT (Gearshift indicator, multifunctional segment display Basic: Travelling time, Distance travelled, Average speed, Immediate consumption, Average consumption, Travel distance before refueling, Service interval, Outside temperature, Clock)	■	■	■	■	-	-
20.32cm ŠKODA Virtual Cockpit	-	-	-	-	■	■
Electronic Driving Aid						
Cruise Control	-	-	■	■	■	■
Rear view camera - with static guidelines	-	-	■	■	■	■
Parktronic Sensor at rear	■	■	■	■	■	■
More						
12V power socket in front centre console	■	■	■	■	■	■

Spare Wheel R(15) is applicable for 1.0 TSI Kodiaq Sportline*

Spare Wheel R(16) is applicable for 1.5 TSI Kodiaq Sportline*

Equipment	Classic	Onyx	Signature	Sportline	Prestige	Monte Carlo
2 x USB-C socket in front (Data & Charging)	-	-	■	■	■	■
Wireless Charging (With Selected Smartphones)	-	-	-	-	■	■
Front sub visors with vanity mirror on co-driver side	■	■	■	■	■	■
Sharkfin antenna	-	-	■	■	■	■
Four Foldable roof grab handles	■	■	■	■	■	■
Storage						
385 litres of boot space with 2 fixed hooks and Top-Tether Points	■	■	■	■	■	■
Storage compartment in the front and rear doors	■	■	■	■	■	■
Bottle holders in the front & Rear doors	■	■	■	■	■	■
Cup holders- Center Rear Armrest	-	-	■	■	■	■
Storage compartment in the front centre console & Centre armrest	■	■	■	■	■	■
Cooled Glovebox	-	-	■	■	■	■
Rear parcel shelf	-	-	■	■	■	■
Simply Clever Features						
Sunglass Holder in Roofliner	-	-	■	■	-	-
Front Seat back Pockets (Driver & Co-Driver)	-	-	■	■	■	■
SmartClip ticket holder	■	■	■	■	■	■
Two USB-C socket in rear (Charging)	-	-	■	■	■	■
Coat hook on rear roof handles	■	■	■	■	■	■
Utility Hooks on the Dashboard	■	■	■	■	■	■
Reflective Tape on all four Doors	■	■	■	■	■	■
Smart Grip Mat for non hand bottle operation	■	■	■	■	■	■

Legend

- Equipment available on the marked trimline
- Equipment not available on the marked trimline

SKODA

www.skoda-auto.co.in | ☎ Toll-free 18 00 27 00 260

Dealer:

Specifications given differ from model to model. As a part of continuous product development, Skoda always upgrades its model range with innovative features. Such features are only available in the vehicles manufactured after a particular date. Please verify the feature list with our authorised dealer. Accessories shown may not be part of standard equipment. Always insist on genuine Skoda Auto parts and accessories available at authorised sales and service centres. Information relating to colours, prices, construction, technical details and equipment was valid at the time of issuance and these are subject to changes without any prior notice. All disputes are subject to the courts in Mumbai jurisdiction only. Terms and conditions apply. The features mentioned in the catalogue (brochure) are of Prestige variant. These images are created using computer graphics and no real car is used while creating these images. The variants Active, Ambition and Style have been renamed to Classic, Signature and Prestige respectively. Car registration will be as per the Homologation documents.